

## AIRGUARD™ COMPRESSOR MONITOR

### OmniMetrix® Air Compressor System Monitoring

*An OmniMetrix® monitoring and control systems connects you instantly from anywhere to real-time and historical information that keeps your facility running at peak efficiency.*

#### REMOTE VISIBILITY AND DIAGNOSTICS

The OmniMetrix® *AIRGuard*™ wireless remote monitoring and control systems is the reliable, cost-effective solution for air compressor monitoring. It connects to most Modbus enabled air compressor systems to easily access and diagnose potential issues and failures. This unit has the ability to monitor key items that provide peace-of-mind and increases reliability and efficiency.

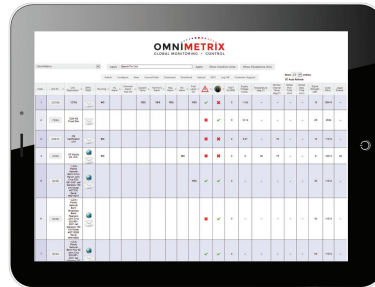
- Air Pressure and Temperature
- Downstream Flowrate and Dewpoint Monitoring
- Compressor Warnings and Shutdowns
- Filter and Separator Condition
- Run & Load Hours, Motor Current
- Up to 256 Alarm and Analog Conditions



#### SIMPLE INSTALLATION AND SUPPORT

- Fast - Most installs completed in under an hour
- Simple - Includes cables, antenna and magnetic mounts
- Patented, over-the-air programming and updates at no additional charge
- Remote technical support included
- Low profile form factor easily mounts to most surfaces via magnetic feet or with screws

#### OMNIVIEW® AND SECURE DATA



OmniView® is our secure, online data management center. It is the real power behind the monitoring and control systems and enables you to make informed decisions 24/7/365.

#### OmniView offers:

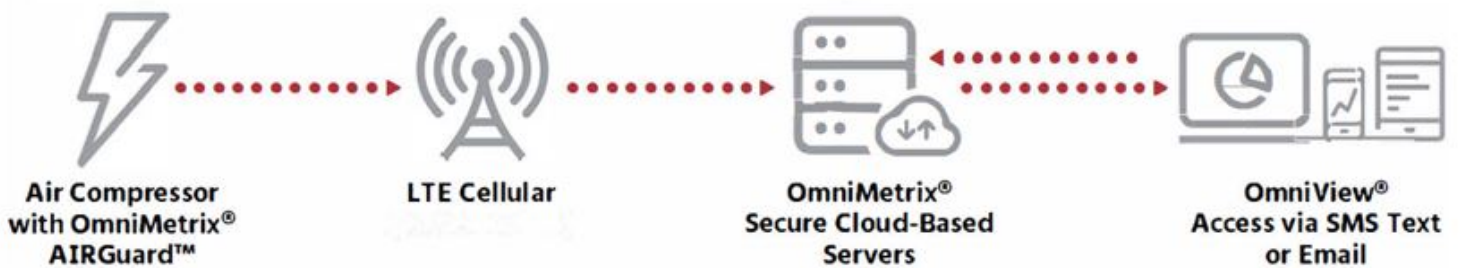
- Interactive 24/7/365 access
- Instant alarm notification via email or text
- Detailed alarm / fault display & history
- Standard and custom reports with data trends
- Service trouble ticket & escalation program
- Secure & redundant servers with data archiving
- Remote diagnostics
- No software to install
- Remote start/stop capabilities

All OmniMetrix monitors feature our patented, over-the-air remote programmability for auto-updating units in the field. Users can view equipment data and alarm status through our data management center, OmniView.

#### CELLULAR COMMUNICATIONS

- 4G LTE Cellular

# PRODUCT TECHNICAL DETAILS & OPTIONS



## CELLULAR COMMUNICATION ANALOG INPUTS

- Cellular - 4G LTE

- (1) 0 - 50 Vdc
- (1) 4 - 20mA (or 0 - 5 Vdc or 0 - 50 Vdc)

## PANEL CONNECTIONS

- Modbus
- RS485 or RS232
- Hardwire

## OPTIONAL ACCESSORIES

- GPS location display
- Power supply (for 120 VAC operation)
- Input/output expansion module
- Panel cable extensions
- Antenna cable extensions

## CONNECTION CAPABILITIES

- Up to 128 Modbus alarm conditions
- Up to 128 Modbus analog parameters
- Up to 4 hardwired alarm inputs
- Up to 1 hardwired analog inputs
- 1 output control relays

## DEVICE DETAILS

- **Display:** 6 Status LED's
- **Size:** 5.5"x4.5"x1.5"
- **Weight:** 1 lbs.
- **Temperature Range:** -40° F to +185° F
- **Power Input:** 9 - 15 Vdc
- **Current (Typical):** 30 mA
- **Current (Max):** 2A
- **Cellular Antenna:** 3 db magnetic mount
- **FCC:** Radio meets FCC Part 90 & 15

\*Unit package is complete and includes installation instructions, panel, cable, antenna cable and antenna

**OMNIMETRIX**  
GLOBAL MONITORING + CONTROL

[www.omnimetrix.net](http://www.omnimetrix.net)

+1 770.209.0012 | [info@omnimetrix.net](mailto:info@omnimetrix.net)

